



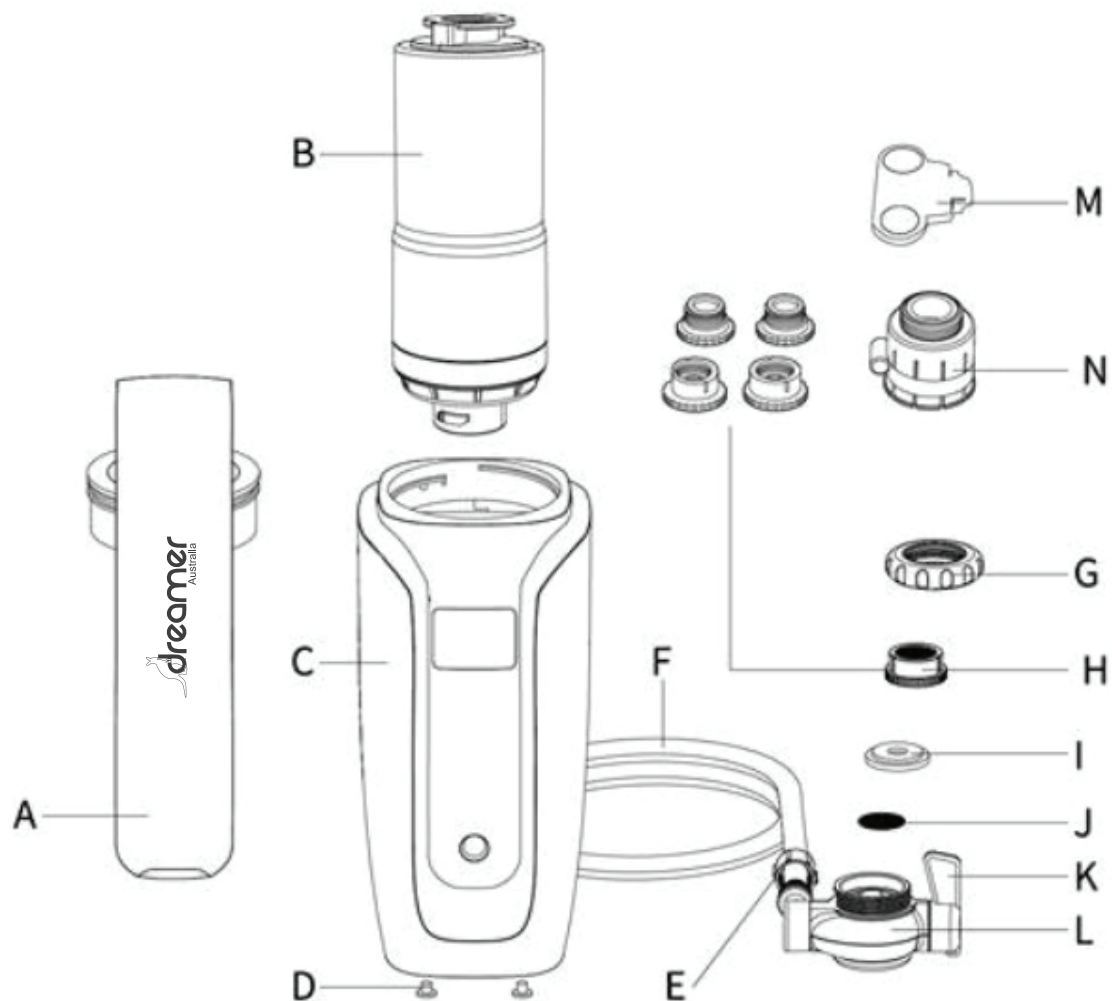
USER'S MANUAL

COUNTER TOP WATER PURIFIER

Model: DHA-WPA160W



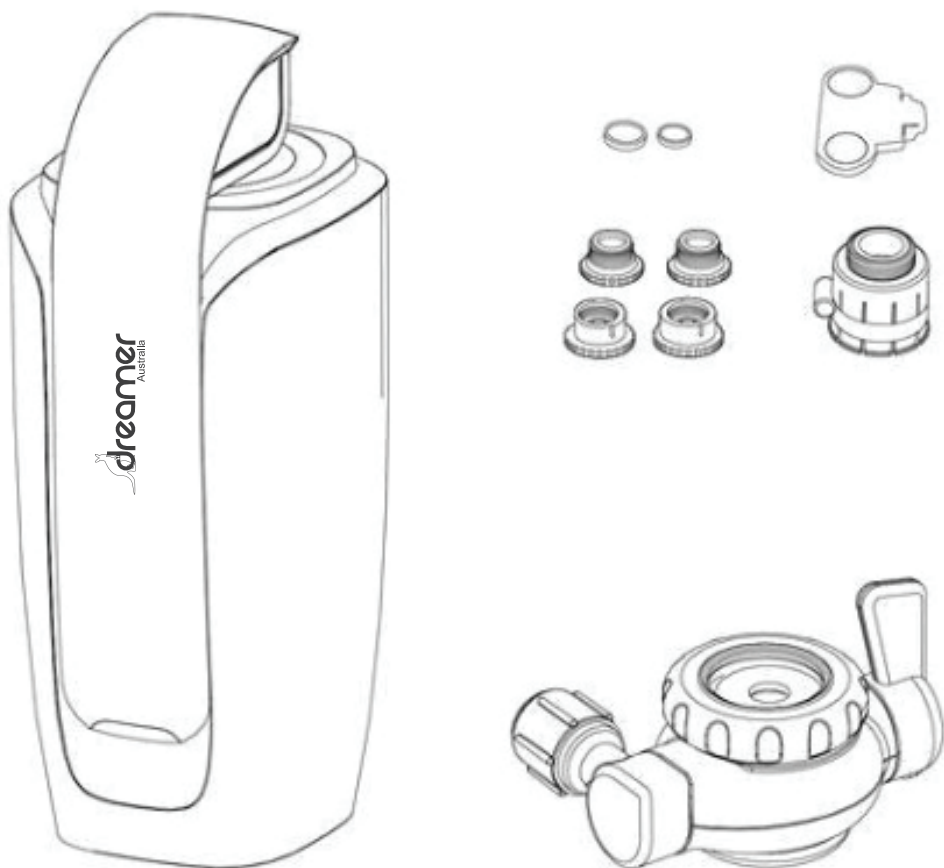
1. Part name



A. Pure water outlet	H. Adapter
B. Composite filter cartridge	I. Silicone washer
C. Water purifier housing	J. Stainless steel mesh
D. Suction cup	K. Switch
E. Water outlet connecting nut	L. Main body
F. Water hose	M. Adapter key
G. Connecting nut	N. Multi-function adapter

2. Please confirm whether the package is complete

1. The water purifier housing.....1 pc
2. Main body.....1 pc
3. Accessories kit.....1 pc
(adapters 4 pcs, silicone ring 4 pcs, adapter key 1 pc, multi-functional adapter 1pc)
4. User manual.....1 pc



3. Safety Precautions

1. Please use the standard tap water.
Avoid damage to the body.
2. Let the water run at the filtered setting for 15 seconds before use each day.
In order to drain the retained water.
3. Let the water run at the filtered setting for 60 seconds before use if you have not used the water purifier for more than two days.
In order to keep the pure water at the water outlet.
4. Please use the "Purified water" as soon as possible.
As there is no residual chlorine in the water, bacteria is easy to reproduce.
Please put the purified water in a covered clean container and store it in a refrigerator.
5. Please do not touch the "purified water" outlet!
Avoid bacteria growth.
6. If there is a lot of turbidity in the tap water (such as cleaning the water tank or not using tap water for a long time, etc.).
Please drain the tap water for some time before using the water purifier.
Avoid shortening the life of filter cartridge.
7. This product is a household water purifier and should not be used for purposes other than cooking or drinking.
Do not connect the special faucets with other machines such as gas-type water heaters, etc.
Avoid damage to other machines.
Please do not install it near flame or high temperature place.
To avoid deformation or rupture, resulting in failure and leakage.
8. Replace the filter cartridge when the water outlet volume is reduced.
Please replace the filter cartridge regularly.
9. Please slowly adjust the knobs for the raw water and pure water.
Avoid damage to the water purifier itself.
10. When used in high pressure can cause damage and leakage.
The working water pressure for this product is 0.1~0.4MPa.
11. Do not freeze this product!
Freezing this product will cause damage.
12. When purifying the tap water, do not use hot tap water above 38°C.

If you accidentally let the hot water pass through the water purifier, there is sometimes temporary odor from the purified water.

13. Do not block the water outlet or connect to other equipment.

To avoid damage to the housing of the water purifier.

14. Never use steel balls, abrasive cleaning agents or corrosive liquids such as alcohol or acetone to clean the water purifier.

These substances may cause cracking, discoloration, or distortion.

15. Please do not disassemble the water purifier housing and filter cartridge.

When an abnormality is found, refer to 8. Troubleshooting.

4. Precautions for using

1. Part of faucet cannot be installed

The water filter can be installed in most the thread faucet with four adapters very easily.

Uninstalled faucets: water sprinkler faucet, the faucet with square outlet or oval outlet, induction faucet, the diameter is out of 15-24mm faucet and the depth of throat is less than 15mm.

2. The replacement periods of the filter cartridge are different based on the water volume, water quality, and water pressure etc.
3. Please keep the water filter temperature less than 38°C in “pure water” mode, if install the water filter in the cold/hot faucet.
4. Please keep the water filter out of the sunlight.

The sunlight will cause the water filter out of shape and change the color.

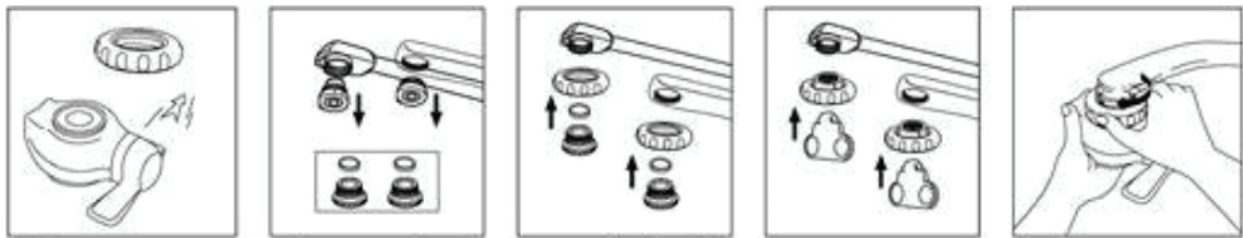
5. The water purifier can not transfer hard water to soft water.
Can not remove dissolved salt (sea water), mineral ions.

5. Installation method

1. Ensure select all the right adapter before installing the water filter.
The diameter of the faucet is 15-24mm.
Check the faucet type, and select the proper adapter.
2. The water filter with the adapters suit for most of the kitchen faucet, but may be not suit for some unnormal and nonstandard faucet.
3. The faucet water pressure must be between 0.1-0.4MPa, If the pressure is less than 0.1MPa, the water flow will be less, if higher than 0.4MPa, it will damage the water filter.

a. Internal thread faucet installation

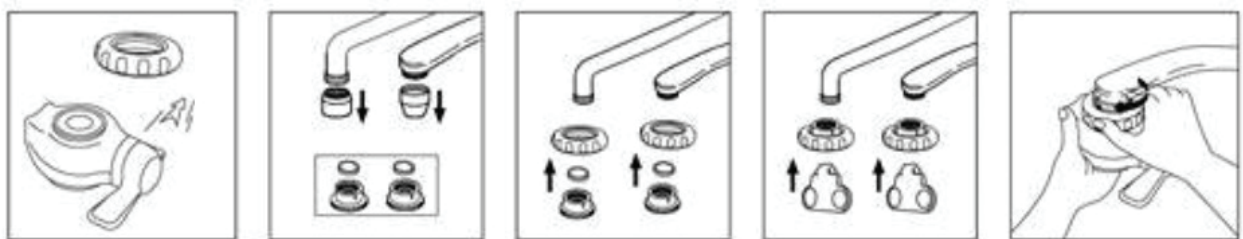
For taps with an aerator (thread inside) with a diameter of 21.55 mm or 23.5 mm.



1. Remove connecting nut from the main body.
2. Remove the tap aerator and choose matching adapter.
3. Install the connecting nut onto the tap, place & tighten adapter over the tip of the faucet.
4. Screw the connecting nut firmly onto the main body.

b. External thread faucet installation

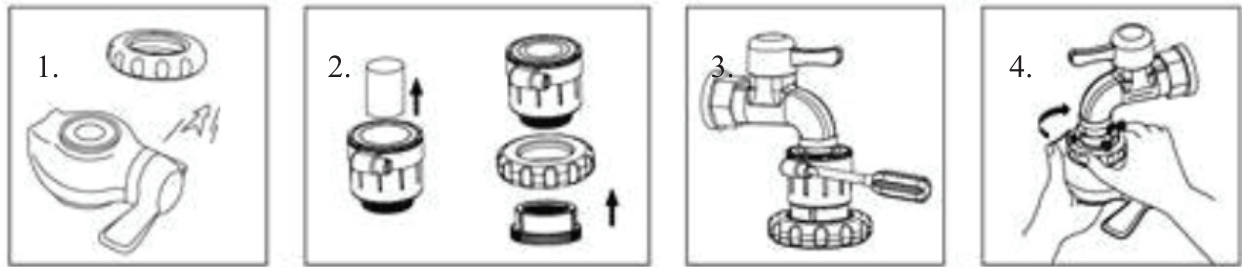
For taps with an aerator (thread inside) with a diameter of 20.5 mm or 23.5 mm.



1. Remove connecting nut from the main body.
2. Remove the tap aerator and choose matching adapter.
3. Install the connecting nut onto the tap, place & tighten adapter over the tip of the faucet.
4. Screw the connecting nut firmly onto the main body.

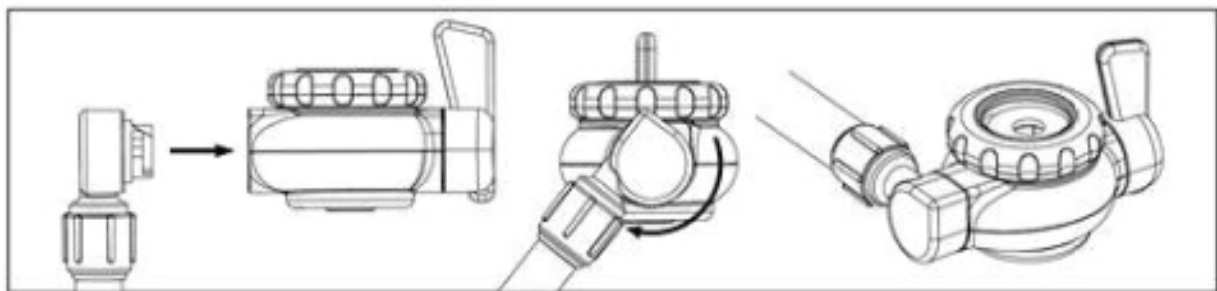
c. Unthreaded faucet installation method

For taps with an aerator (unthreaded) with a diameter of 15-22mm.

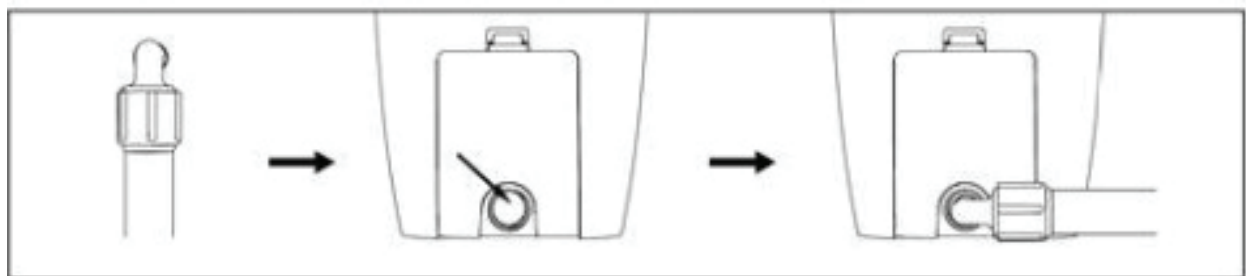


1. Remove the mounting nut from the main unit.
2. Put the silicone ring gasket into the adapter, put on the connecting nut and screw it into the multi-function adapter.
3. Insert the multifunction adapter into the tap and tighten the retaining ring with a screwdriver.
4. Screw the attachment nut firmly onto the water purifier housing.

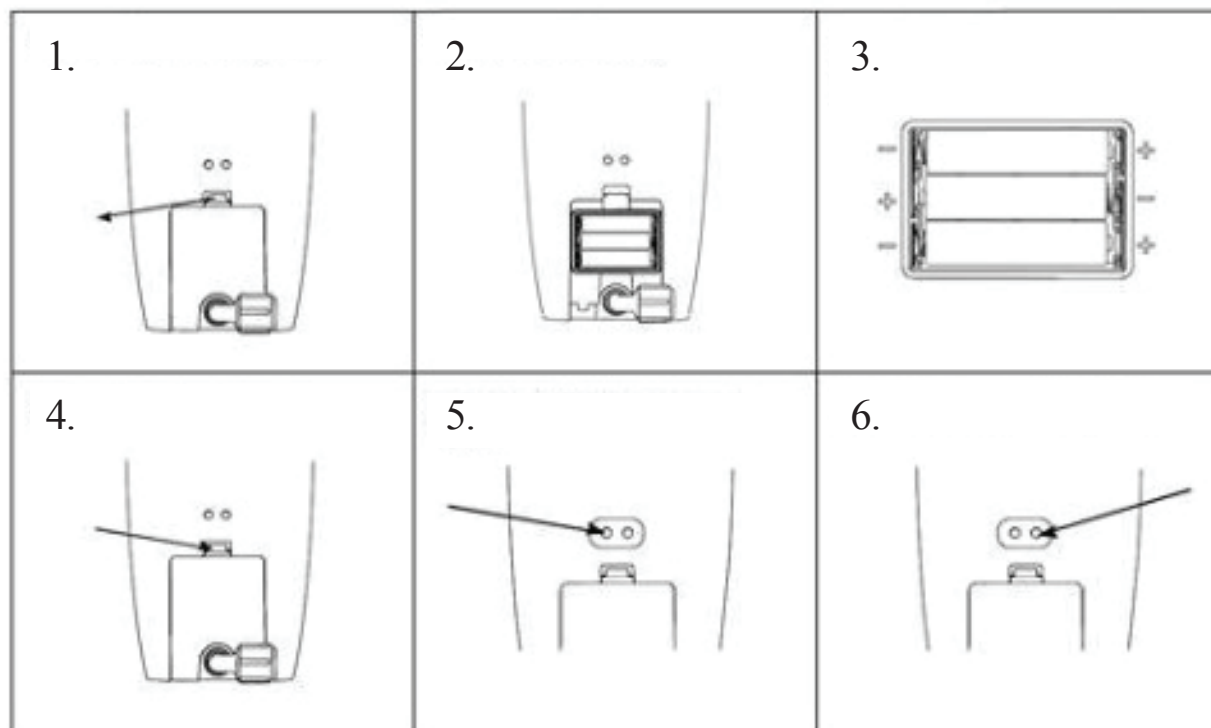
Installation for the main body and the hose



The hose connect with the housing



6. Battery Replacement Method and Functions Description



1. Take off the battery cover.
2. Remove the battery.
3. Install the battery according to the correct cathode anode ends.
4. Close the battery cover.
5. Display filter lifespan reset button.
6. Display time setting button.

Function Description

1. When the batteries work, LCD self-tests for about 1 second (showing all LCD characters).
2. After self-checking, the LCD indicates "6000" as initial filter lifespan.
3. If the purified water flow is more than 0.5L/min, the LCD is awakened and calculates the flow.
4. When the battery power is 3.5-3.8V, the screen appears low battery icon until the battery is replaced.

7. Filter replacement method and maintenance

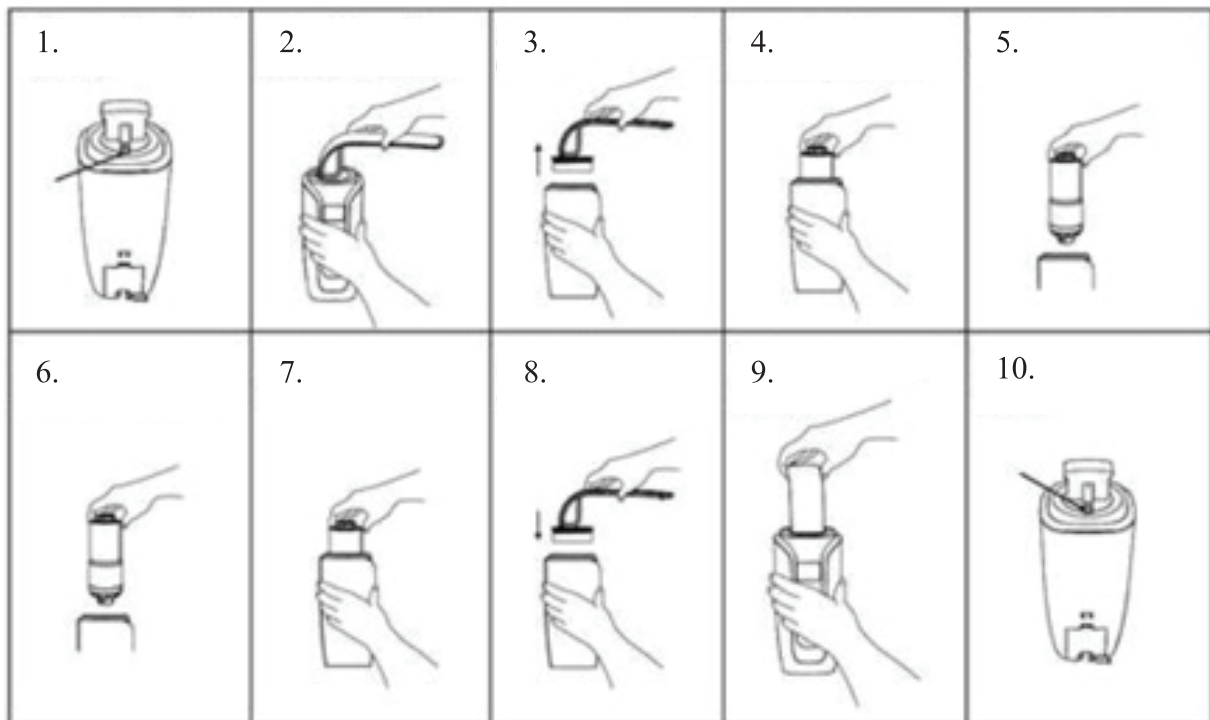
For long-term use, be sure to replace the filter cartridge within the replacement cycle.

Due to the different local water quality, sometimes the purified water volume is not reduced, but the activated carbon is saturated, please try to replace the filter cartridge according to the recommended cycle.

If you encounter the following situation, please replace the filter cartridge.

1. The purified water volume is significantly reduced.

2. The residual chlorine (bleaching powder) smell and other odor have been produced!



1. Push out the fixed bracket.
2. Turn the outlet counterclockwise.
3. Remove the outlet cover.
4. Turn the filter counterclockwise.
5. Remove the used filter cartridge.
6. Replace with the new filter cartridge
7. Install the new filter cartridge.
8. Install the outlet cover.
9. Turn the outlet clockwise.
10. Push in the fixed buckle.

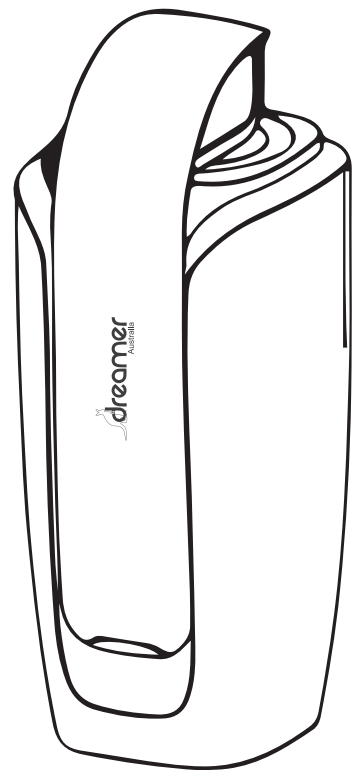
8. Trouble Shooting

Problem	Possible reasons	Solutions
- Main body head leaking	<ul style="list-style-type: none"> - Whether installed properly to the faucet or not ? - Whether the faucet is aged or not ? - Whether the seal is aged or not ? 	<ul style="list-style-type: none"> - Re-install. - Repair the faucet. - Replace the seal.
	<ul style="list-style-type: none"> - Whether house nut of the main body tight enough ? - Whether the seal ring damage or not? 	<ul style="list-style-type: none"> - Reconnect in the right way. - Replace the seal.
- Water hose leaking	<ul style="list-style-type: none"> - Whether the hose connected properly or not ? 	<ul style="list-style-type: none"> - Re-connect in the right way.
- Housing leaking	<ul style="list-style-type: none"> - Whether the filter hose connected properly or not? - Whether housing have residual water or not? 	<ul style="list-style-type: none"> - Reconnect in the right way. - Wipe up the water.
- Raw water flow low and uneven	<ul style="list-style-type: none"> - Whether the filter mesh is dirty or not ? - Whether the raw water outlet is clean or not? 	<ul style="list-style-type: none"> - Wash with a clean soft brush sterilized by hot water.
- Pure water flow low	<ul style="list-style-type: none"> - Whether in inlet hose folded or not ? - Whether filter cartridge is blocked or not? 	<ul style="list-style-type: none"> - Put the inlet hose in the proper way. - Replace the filter cartridge (if the water pressure is low, the pure water flow will be low too).
- Odor	<ul style="list-style-type: none"> - Whether the filter cartridge is installed properly? - Whether the filter cartridge is expired or not? 	<ul style="list-style-type: none"> - Install in the right way - Replace the filter cartridge.

Specifications

Product Name :	Counter top water purifier
Type:	Directly faucet installed
Water flow:	2L/min
Capacity:	6000L
Water Source:	Municipal tap water
Working pressure:	0.1-0.4MPa
Suitable water temperature:	5-38°C
Accessories	4 x adapters 1 x multi-functional adapter 1 x adapter key

Please keep this user manual carefully





Dreamer Customer Service Centre

68 Radiata Street, Hillcrest 4118, Queensland, Australia
Phone: +614 1416 8738