



USER'S MANUAL



Model: DK-S17D

SMART KETTLE
Just exact way to boil

CONTENTS:

| | |
|--------------------------------------|-----|
| I. SAFETY INSTRUCTIONS | P.1 |
| II. SPECIFICATIONS | P.1 |
| III. COMPONENTS | P.2 |
| IV. BEFORE YOU START | P.3 |
| V. HOW TO USE | P.4 |
| VI. TROUBLESHOOTING & WARNING SIGNAL | P.5 |

I. SAFETY INSTRUCTIONS:

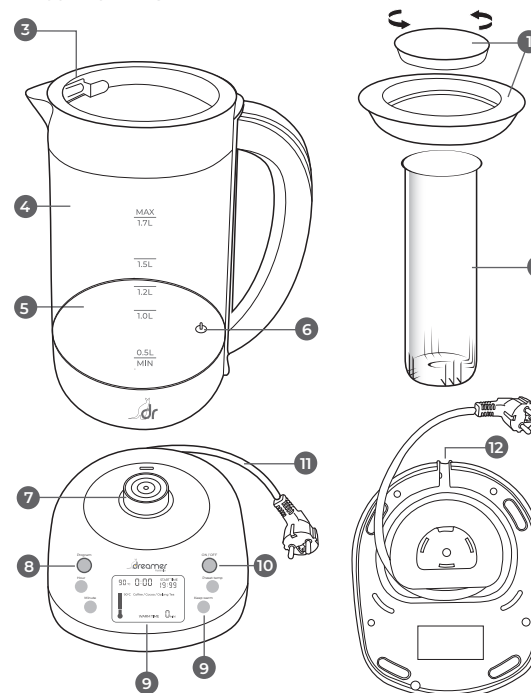
Before using this appliance, read the following instructions carefully and keep the instruction manual for future use:

1. Before connecting the appliance to a wall socket, make sure that the local power supply grid matches the appliance rating plate. Always plug your appliance into an earthed socket.
2. If the supply cord is damaged, it must be replaced by the manufacturer, its service agent or similarly qualified persons in order to avoid a hazard.
3. This appliance can be used by children aged from 8 years and above and persons with reduced physical, sensory or mental capabilities or lack of experience and knowledge if they have been given supervision or instruction concerning use of the appliance in a safe way and understand the hazards involved.
4. Children shall not play with the appliance.
5. Cleaning and maintenance shall not be made by children unless they are older than 8 and supervised.
6. Keep the appliance and its cord out of reach of children aged less than 8 years.
7. The surfaces of the appliance are liable to get hot during use.
8. Always disconnect the appliance from the supply if it is left unattended and before cleaning.
9. This appliance is intended to be used in household and similar applications such as:
 - Staff kitchen areas in shops, offices and other working environments;
 - By clients in hotels, motels and other residential type environments;
 - Bed and breakfast type environments.
10. Do not use for other than heating water. Other liquids or food will contaminate the interior and void warranty.
11. The appliance is only to be used with the stand provided.
12. WARNING: Avoid spillage on the connector.
13. WARNING: Potential injury from misuse.
14. The heating element surface is subject to residual heat after use.
15. While using the appliance, the water level has to be between the MIN and MAX marking of the scale.
16. If the kettle is overfilled, boiling water may be ejected
17. Defective electrical appliances must be recycled and not disposed of with household waste.

II. SPECIFICATIONS:

| | |
|--------------|--------------------------------|
| Power supply | 220-240 V~, 50/60 Hz |
| Power output | 2000 W |
| Capacity | 1.7 L |
| Material | Inox 304 - Glass - ABS Plastic |

III. COMPONENTS:



| | |
|--------------------------|------------------------|
| 1. Lid | 9. Hour Button |
| 2. Glass tea infuser | 10. Minute button |
| 3. Glass vessel | 11. LCD Screen |
| 4. Removable mesh filter | 12. Keep Warm button |
| 5. Heating surface | 13. Preset temp button |
| 6. Temperature sensor | 14. ON/OFF button |
| 7. Power Base | 15. Power Cord |
| 8. Program Button | 16. Open hole cable |

8.9cm

8.9cm

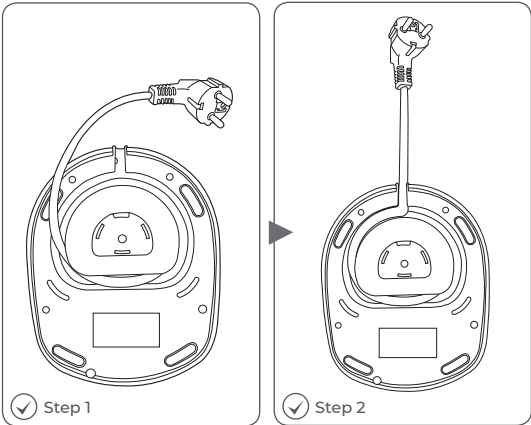
8.9cm

26.7x18cm

18cm

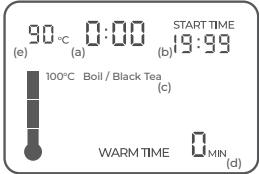
IV. BEFORE YOU START:

1. Unpack all parts.
 2. Check for completeness and shipping damage immediately after unpacking. If your shipment is damaged or incomplete, please contact our customer service.
 3. Install kettle power cable.
- The power cable should be just as long as needed. Wrap excess power cable on the cable wrap. Insert the power cable into the cable opening. Connect the power cable to the socket.



4. Quick Installation Guide:

- Before you insert the power cable into the cable opening. The buzzer of power base will sound, the LCD screen turn on. (a) The current time will flash 0:00; (b) The start time will show 19:99; (d) Warm time 0 MIN. (c) Default setting temperature is 100°C and (e) show the water temperature.
 - Setting the current time: press HOUR button until current HOUR is displayed in AM or PM. Then press MINUTE button until the current time will show on LCD screen.
 - Set the temperature display to °F or °C by pressing PRESET TEMP and KEEP WARM simultaneously.
5. Open Lid and fill Kettle with water to the MAX fill line on the Water Level Window on the kettle. Press ON/OFF to boiling water at 100°C, after boiling water, the kettle will turn off automatically. Pour water and repeat 2-3 times, rinsing out the kettle each time. The Kettle is ready to use.



3

8.9cm

V. HOW TO USE:

| Boiling water |
|---|
| (1) Press PRESET TEMP button to select desired temperature, (2) press ON/OFF button to start boiling water, Orange light of the button will flash. Temperature (e) will change according to the current time. When the kettle finishes boiling water, the buzzer on the base will sound 3 times "beep – beep". If the setting temperature is lower than the current temperature of the water in the kettle, the buzzer will sound 3 times "beep-beep" and the device returns to standby mode. |
| KEEP WARM function |
| Press KEEP WARM button anytime during boiling water or before that to choose keep warm time (15", 30", 45", 60"). Keep warm temperature can be change by PRESET TEMP button during keep warm time. KEEP WARM function be activated and maintained when ON/OFF key is light. Keep warm time (c) will count down in every minute. When the countdown time is over, the buzzer on the base will sound 3 times "beep – beep" and the device returns to standby mode. |
| TIMER function |
| Make sure the current time (a) has been installed correctly. (1) Press and keep PROG button in 2 seconds, Led button will blink. (2) Press HOUR button and MINUTE button to set the time to make a timer for the kettle. (3) Press PROG button to confirm, Led button will keep the lights on. (4) Press PRESET TEMP button to select the levels of temperature you want to boil. (5) Press KEEP WARM button to choose keep warm time after boiling water if it necessary. |

Note:

- For safety reasons, keep warm function is not available for 100°C for temperature setting.
- If the setting temperature before pressing PROG button is 100°C, the device will return to the lowest temperature (40°C).
- Keep warm function still working when you lift the kettle and put down in 1 minute.
- KEEP WARM time will be activate when the timer completed.

► Preparation Temperature Guide:

| Type of drinks | Suitable temperature |
|-------------------------------|----------------------|
| ■ Baby formula | 40°C |
| ■ Baby weaning | 50°C |
| ■ Cereal/Delicate Tea | 60°C |
| ■ Herbal Tea / Green Tea | 80°C |
| ■ Coffee / Cocoa / Oolong Tea | 90°C |
| ■ Black Tea / Boil | 100°C |

4

8.9cm

VI. TROUBLESHOOTING & WARNING SIGNAL:

- a) If the kettle floor discolors: It is normal for stainless steel heating elements to discolor. This does not affect the performance of the Kettle. Do not use abrasive scouring pads or cleaners since this may damage the stainless steel surface.
- b) When all the keys are found to be ineffective, all the indicators are not on. After the power is turned on again, the buzzer will briefly sound two alarms and then return to the previous state. It means that the kettle body and the base are not good contact, re-place it once make good contact and just power on. If the problem persists, when you stop using it, send it for repair
- c) When the buzzer of the machine continuously emits alarm sounds, all the light flash, indicating that the machine may have dried up without water and the temperature in the pot is too high. Please stop using it immediately, turn off the power and pour in cold water to cool down. Wait for the kettle to cool down and then power it on again. If the problem persists, stop using it and send it for repair.
- d) When all the indicator lights of the machine keep flashing, the buzzer does not alarm, and all the keys are invalid, it means that the temperature sensor of the kettle is abnormal. Disconnect the power supply and power on again. If the problem persists, stop using it and send it for after-sales maintenance



Electrical Shock Hazard. Do not immerse Kettle, Power Base or plug in water or any other liquid.

Dreamer Customer Service Centre

Australia Customer
64 Radiata Street, Hillcrest 4118, Queensland, Australia
Phone : +614 1416 8738



5

8.9cm

26.7x18cm